

**Annual Report  
July 1, 1995 - June 30, 1996  
Department of Epidemiology**

**I. Department Organization and Administration**

Support Staff

(as of June 30, 1996)

Administrative Staff

Nancy Colvin	Student Services Manager
Carolyn Cooke	Fiscal Manager
Terry Hudgins	Director, Computer Services
Gail King	Administrative Manager
Susan King	Accounting Clerk
Lesa McPherson	Human Resources Manager
Patrice Robbins	Accounting Clerk
Betsy Seagroves	Administrative Secretary
Carmen Woody	Student Services Assistant
Amy Webb	Accounting Technician

Secretarial Staff

Esa Bloedon	Office Assistant
Anne Crumpler	Office Assistant
Jane Foust	Office Assistant
Edna Lennon	Office Assistant
Carol Morton	Office Assistant
Sharon Pope	Office Assistant
Virginia Reid	Office Assistant

Research Staff

Philip Bors	Social Research Associate
Tammie Carlton	Social Research Assistant
Darrah Degnan	Social Research Assistant
Phyllis Johnson	Administrative Assistant
Marilyn Knowles	Social Research Assistant
Catherine Paton	Social Research Associate
Deanne Rhodes	Research Technician
Jadis Robinson	Social Research Assistant
Girard Salak	Social Research Assistant
Catherine VanDoren	Staff Clinic Nurse
Susanne Wolf	Research Associate
Natalie Young	Research Technician
Boyd Yount	Research Technician

Computer Programming Staff

Eileen Gregory	Applications Analyst Programmer
Richard Howard	Applications Analyst Programmer
Ans Janssens	Applications Programmer
Robert Kleckner	Applications Analyst Programmer
Veda Manley	Data Processing Coordinator
Vic Rhodes	Applications Analyst Programmer
Joanna Smith	Applications Analyst Programmer
Jessica Tse	Applications Analyst Programmer
Joy Wood	Applications Analyst Programmer

Employee Terminations

Lorraine Alexander	Research Associate, resignation
Joyce Allen	Student Services Manager, retire
Jonathan Frye	Research Technician, resignation
Stephanie Miller	Accounting Technician, resignation
Gerri Roberts	Statistician, resignation
Debra Weiner	Statistician, resignation
Minna Wiley	Social Research Assistant, layoff

**II. Faculty and Students****A. List of Faculty [\* indicates primary of multiple academic appointments]****1. Full-Time Faculty**

Lorraine Alexander, Clinical Assistant Professor  
 Ralph S. Baric, \*Associate Professor, Epidemiology  
 Associate Professor, Microbiology & Immunology  
 Elizabeth Conlisk, Research Assistant Professor  
 Kathleen Dorsey, Research Assistant Professor  
 Hilton Goulson, Emeritus Professor  
 J. Ed Hall, \*Associate Professor, Epidemiology  
 Associate Professor, Pathology  
 Maria Hall, Clinical Assistant Professor  
 Gerardo Heiss, Professor  
 Irva Hertz-Picciotto, Associate Professor  
 Barbara S. Hulka, \*Kenan Professor  
 Clinical Professor, Family Medicine  
 Adjunct Professor of Community and Family  
 Medicine, Duke University Medical Center  
 Michel A. Ibrahim, Dean, School of Public Health  
 \*Professor, Epidemiology

Professor, Social and Administrative Medicine  
Berton H. Kaplan, Professor  
Lenore Kohlmeier, Professor, Epidemiology  
\*Professor, Nutrition  
Eugene Lengerich, Research Assistant Professor  
Duangping Liao, Research Assistant Professor  
Edison Liu, Associate Professor, Epidemiology  
\*Associate Professor, Medicine  
Dana Loomis, Assistant Professor  
Robert Millikan, Assistant Professor  
Patricia Moorman, Research Assistant Professor  
Beth Newman, Assistant Professor  
Andrew Olshan, Assistant Professor  
Wendie Robbins, Assistant Professor, Epidemiology  
\*Clinical Assistant Professor, Curriculum in Public Health Nursing  
Wayne Rosamond, Assistant Professor  
Rachel Royce, Assistant Professor  
David A. Savitz, Professor  
Victor J. Schoenbach, Associate Professor  
J. Richard Seed, Professor  
Cecil G. Sheps (Emeritus), Professor, Epidemiology  
\*Professor, Social and Administrative Medicine  
Carl M. Shy, \*Professor & Chair, Epidemiology  
Professor, Environmental Sciences and Engineering  
Clinical Professor, Family Medicine  
Lola Stamm, Associate Professor  
June Stevens, Associate Professor, Epidemiology  
\*Associate Professor, Nutrition  
James Thomas, Assistant Professor  
Herman A. Tyroler, Emeritus, Alumni Distinguished Professor  
Marilyn Vine, Assistant Professor  
David Weber, Associate Professor, Epidemiology  
\*Associate Professor, Medicine  
Kristen Weigle, \*Associate Professor, Epidemiology  
Associate Professor, Pediatrics  
Steven B. Wing, Associate Professor

2. Part-Time Faculty

3. Visiting Faculty

None

## 4. Adjunct and Fixed-Term Joint Appointments

Timothy Aldrich, Adjunct Assistant Professor  
 Naomar Almeida-Filho, Adjunct Associate Professor  
 Elizabeth Andrews, Adjunct Assistant Professor  
 Michael H. Arrighi, Adjunct Assistant Professor  
 Donna Baird, Adjunct Assistant Professor  
 John Barefoot, Adjunct Associate Professor  
 James C. Barrett, Adjunct Professor  
 James Beck, Adjunct Professor  
     \*Professor, Dental Ecology  
 Douglas Bell, Adjunct Associate Professor  
 Richard A. Berzon, Adjunct Assistant Professor  
 Dan German Blazer, Adjunct Professor  
 Brian A. Boehlecke, Clinical Associate Professor  
     \*Associate Professor, Medicine  
 W. Eugene Broadhead, Adjunct Assistant Professor  
 Gregory Burke, Adjunct Professor  
 Leigh Callahan, Adjunct Assistant Professor  
 Timothy S. Carey, Clinical Associate Professor  
     \*Associate Professor, Medicine  
 Willard Cates, Adjunct Professor  
 Dennis A. Clements, III, Adjunct Assistant Professor  
 Thomas Cole, Adjunct Assistant Professor  
 Glinda Cooper, Adjunct Assistant Professor  
 Joan Cornoni-Huntley, Adjunct Professor  
 John R. Crouse, Adjunct Associate Professor  
 Gordon H. DeFriese, Clinical Professor, Epidemiology  
     \*Professor, Social and Administrative Medicine  
 Robert Desowitz, Adjunct Professor  
 Sara Ephross, Adjunct Assistant Professor  
 Richard B. Everson, Adjunct Professor  
 Paul Feldblum, Adjunct Assistant Professor  
 Jo-David Fine, Clinical Professor, Epidemiology  
     \*Professor, Dermatology  
 Suzanne Fletcher, Clinical Professor  
 Judith A. Fortney, Adjunct Professor  
 Jean French, Adjunct Professor  
 Joanne Garrett, Adjunct Assistant Professor  
     \*Research Associate Professor, Sheps Center for Health Services  
     Research  
 Peter Garrett, Adjunct Assistant Professor  
 Paul Godley, Clinical Assistant Professor  
 Raymond S. Greenberg, Adjunct Professor  
 Jack Griffith, Adjunct Professor

Harry A. Guess, Adjunct Professor  
Curtis G. Hames, Clinical Professor  
Russell P. Harris, Adjunct Assistant Professor  
    \*Assistant Professor, Medicine  
Carl G. Hayes, Adjunct Professor  
Michael Hogan, Adjunct Associate Professor  
Ronald J. Hunt, Clinical Professor  
    \*Professor, Dental Ecology  
Nancy Hunter, Adjunct Assistant Professor  
Debra E. Irwin, Adjunct Assistant Professor  
Sherman James, Adjunct Professor  
Ulrich Keil, Adjunct Professor  
Suzanne Landis, Adjunct Associate Professor  
    \*Clinical Assistant Professor, Medicine  
Ruth E. Little, Adjunct Professor  
Stephanie London, Adjunct Associate Professor  
Matthew Longnecker, Adjunct Associate Professor  
J. Newton MacCormack, Adjunct Associate Professor  
Peter Margolis, Clinical Assistant Professor  
    \*Assistant Professor, Pediatrics  
Margaret F. McCann, Adjunct Assistant Professor  
William F. McDonnell, Adjunct Associate Professor  
Melinda S. Meade, Adjunct Professor, Epidemiology  
    \*Professor, Geography  
Wilbur Milhous, Adjunct Associate Professor  
Dexter Morris, Adjunct Assistant Professor  
    \*Assistant Professor, Emergency Medicine  
Azmi A. Nabulsi, Adjunct Assistant Professor  
George R. Parkerson, Adjunct Associate Professor  
Miquel Porta, Adjunct Associate Professor  
David F. Ransohoff, Clinical Professor  
    \*Professor, Medicine  
Walter J. Rogan, Adjunct Associate Professor  
Bonnie Rogers, Clinical Associate Professor  
Michael J. Rosenberg, Adjunct Associate Professor  
Andrew Rowland, Adjunct Assistant Professor  
Carol Runyan, Adjunct Associate Professor  
    \*Associate Professor, Health Behavior and Health Education  
Desmond K. Runyan, Clinical Associate Professor  
    \*Associate Professor, Social and Administrative Medicine  
Gregory Samsa, Adjunct Assistant Professor  
Dale Sandler, Adjunct Professor  
Robert S. Sandler, Clinical Professor  
    \*Professor, Medicine  
Vilma Santana, Adjunct Assistant Professor

William Saunders, Adjunct Assistant Professor  
Joellen M. Schildkraut, Adjunct Assistant Professor  
Pamela Schwingl, Adjunct Assistant Professor  
David Sheps, Clinical Professor  
    \*Professor, Cardiology  
Ilene C. Siegler, Adjunct Associate Professor  
Gary Slade, Clinical Assistant Professor  
Philip Sloane, Clinical Professor  
    \*Professor, Family Medicine  
David C. Sokal, Adjunct Professor  
C. Gregory Smith, Adjunct Assistant Professor  
John Stamm, Adjunct Professor  
    \*Professor and Dean, Dentistry  
Paul E. Stang, Adjunct Assistant Professor  
Ronald Strauss, Clinical Professor  
David Strogatz, Adjunct Associate Professor  
Patricia Tennis, Adjunct Assistant Professor  
Hugh H. Tilson, Adjunct Professor  
James F. Toole, Adjunct Professor  
Edward H. Wagner, Clinical Professor  
Jane Weintraub, Adjunct Associate Professor  
Alice White, Adjunct Assistant Professor  
Timothy Wilcosky, Adjunct Assistant Professor  
Allen J. Wilcox, Adjunct Professor  
Mark E. Williams, Clinical Associate Professor, Epidemiology  
    \*Associate Professor, Medicine  
Redford Williams, Adjunct Professor  
Bonnie C. Yankaskas, Adjunct Assistant Professor  
    \* Assistant Professor, Radiology

B. Changes During the Year

1. Additions:

Lorraine Alexander, Clinical Assistant Professor  
Elizabeth Conlisk, Research Assistant Professor  
Maria Hall, Clinical Assistant Professor  
Eugene Lengerich, Research Assistant Professor  
Duangping Liao, Research Assistant Professor

2. Promotions:

Irva Hertz-Picciotto from Assistant Professor to Associate Professor  
Steven B. Wing from Assistant Professor to Associate Professor

3. Changes in Rank:

Christine Moe from Research Assistant Professor to Assistant Professor

4. Leaves:

None

5. Losses: Resignations

None

Losses: Retirement

None

C. Honors

*Faculty Honors*

Dr. Carl Shy received an award for "outstanding contributions to the practice of epidemiology in North Carolina." This award was given by the Epidemiology and Statistics Section of the North Carolina Public Health Association.

Dr. Berton H. Kaplan was selected to participate in the *Carolina Speakers* bureau.

Dr. Robert Millikan was invited by the National Breast Cancer Coalition to help organize Project LEAD, an innovative program for breast cancer activists teaching the latest developments in molecular biology, cell biology, epidemiology and biostatistics.

*Student Honors*

Lisa Pastore received the Travel and Book Award from Delta Omega (Theta Chapter), School of Public Health.

Pam Marcus was the recipient of the Annual School of Public Health Alumni Conference Student Award, for her outstanding scholarship and service in the department.

Amy Sayle received the Student Book Award from the Delta Omega Theta Chapter, in recognition of her involvement in ESO and contributions as a teaching assistant.

Epidemiology students Antonio Cunha, Angela Liese, Kate Curtis, and Dan Caplan were inducted into the Delta Omega Honor Society.

Beverly Rockhill has been awarded the Caroline H. and Thomas S. Roister, Jr. Dissertation Fellowship for 1996-1997. This award conveys membership in the Carolina Society of Fellows, the highest honor awarded to graduate students at UNC-CH.

### III. Instructional Programs

- A. There have been no major curriculum changes during the 1995-96 academic year.
- B. There have been no program additions or deletions during the 1995-96 academic year.
- C. Learning objectives for the MPH, MSPH and PhD programs have not changed during the past year. Requirements for the new DrPH program under Public Health Leadership have been defined as described below:

DrPH: The Doctor of Public Health (DrPH) is offered in conjunction with the schoolwide Public Health Leadership program. A student entering the leadership program to major in epidemiology must have an MPH in epidemiology or equivalent coursework.

DrPH students spend twelve months in residency on campus, during which they complete forty-one credit hours, including a sequence of courses and seminars prescribed by the leadership program and twelve hours of coursework specified by the department of epidemiology.

After the twelve-month residency, students return to their places of employment, where they complete their dissertations, which are of an applied nature. Students are also required to take written and oral preliminary examinations.

- D. There were no special courses or programs offered during the past academic year.



- E. Field training experience in Epidemiology is not handled through the method of placement with an agency or institution. Students enter the program with satisfactory research experience or work individually with faculty in ongoing research projects.

#### **IV. Research Programs**

##### **Grant Awards**

Adult Health Promotion Epidemiology, Principal Investigator, **Carl Shy**, DEHNR, \$253,035

Cancer Mortality in Minority Workers, Principal Investigator, **Dana Loomis**, Centers for Disease Control, \$119,412

Hypergen, Principal Investigator, **Gerardo Heiss**, NIH - NHLBI, \$38,311

Pesticide Poisoning in North Carolina, 1990-1993, Principal Investigator, **Carl Shy**, NC Department of Agriculture, \$24,510

Studies of Environmental Pollution of Health Effect in South Tifton Communities, Principal Investigator, **Irva Hertz-Picciotto**, CLOUT, \$

Time Related Factors in Radiation - Cancer Dose Response, Principal Investigator, **Steven Wing**, NIOSH, \$28,276

Evaluation of Perinatal HIV Prevention in North Carolina, Principal Investigator, **Rachel Royce**, Duke Medical Center, \$201,725

##### Epidemiology Faculty Grants administered through other departments

The Impact of Age on the BMI Mortality Relationship, Principal Investigator, **June Stevens**, NIH, \$ [administered through the Department of Nutrition]

## Publications

Ananth CV, Peedicayil A, Savitz DA. Effect of hypertensive diseases in pregnancy on birth weight, gestational duration and small-for-gestational-age births. Epidemiology 1995; 6:391-5.

Ananth CV, Savitz DA, Bowes WA. Hypertensive disorders of pregnancy and stillbirth in North Carolina, 1988 to 1991. Acta Obstet Gynecol Scand 1995; 74:788-93.

Armstrong DL, Wing SB, Tyroler HA. United States mortality from ill-defined causes, 1968-1988: Potential effects on heart disease mortality trends. Int J Epidemiol 1995; 24:522-527.

Arrighi HM, Hertz-Picciotto I. Controlling for time-since-hire in occupational studies using internal comparisons and cumulative exposure. Epidemiol 1995; 6:415-418.

Borja-Aburto VH, Loomis DP, Shy C, et al.: Air pollution and daily mortality in Mexico City. Epidemiol 1995; 6(suppl.):S64.

Burke GL, Evans GW, Riley WA, Sharrett AR, Howard G, Barnes RW, Rosamond W, Crow RS, Rautaharju PM, Heiss G. Arterial wall thickness is associated with prevalent cardiovascular disease in middle-aged adults. The Atherosclerosis Risk in Communities (ARIC) Study. Stroke 1995; 26:386-391.

Bush AO, Caira JN, Minchella D, Nadler SA, Seed JR. Parasitology year 2000. J Parasitol 1995; 81:835-842.

Butler L, Newman B, Friedman L, Ostermeyer F, Morrow J, Dowd P, Moorman P, Millikan R, King M-C. Frequency and spectrum of inherited mutations in BRCA1 from a population-based study [abstract]. Am J Hum Genet 1995; 57: 319.

Chen W, Baric RS. Function of a 5' end mutation that evolves during persistent MHV infection in vitro. J Virol 1995; 69:7529-7540.

Clements DA, Weigle KA, Guise I, Gilbert GL. A case control study examining risk factors for Haemophilus influenzae type B disease in Victoria, Australia. 1988-90. J Paediatr Child Health 1995; 31:513-518.

Greenberg RS, Buffler PA, Hinman AR, Swanson GM, Matanoski GM, Nasca PC, Bracken MB, Schoenbach VJ. Commentary - American College of Epidemiology Statement of Principles. Ann Epidemiol 1995; 5:503-504 and Statement of Principles: Epidemiology and Minority Populations. Ann Epidemiol 1995; 5:505-508.

Hardham JM, Frye JG, Stamm LV. Identification and sequences of the Treponema pallidum fliM, fliY, fliP, fliQ, fliR, and fliB genes. Gene 1995; 166:57-64.

Hertz-Picciotto I. Environmental risk assessment. Chapter 2 in: Introduction to Environmental Epidemiology, B Lewis, E Talbot & G Craun, eds., Lewis Publishers, Chelsea, MI, 1995, pp. 23-38.

**Hertz-Picciotto I.** Epidemiology and quantitative risk assessment: A bridge from science to policy. Am J Public Health 1995; 85:484-491.

**Hertz-Picciotto I.** Surveillance in environmental health (commentary). Am J Public Health 1986; 86:638-641.

**Hertz-Picciotto I, Hatch M.** Glass ceiling: bump, bump (letter). Science 1995; 269:1328.

**Hulka BS.** Author's reply to: Breast cancer and very-low-dose x-rays. Lancet 1995; 346:1702.

**Hulka BS, Brinton LA.** Hormones and breast and endometrial cancers: preventive strategies and future research. Environ Health Perspect 1995; 103(8):185-189.

**Hulka BS, Stark A.** Breast cancer: cause and prevention. Lancet 1995; 346:883-887.

**Kardinaal AA, Salminen I, Kark JD, Riemersma RA, Delgado-Rodriguez M., Gomez-Aracena J, Huttunen JK, Kohlmeier L, Marrrtin BC, Martin-Moreno JM, Mazaev VP, Ringstad J, Thamm M, van't Veer P, Kok FJ.** Adipose tissue isomeric trans fatty acids and the risk of myocardial infarction in different countries: the EURAMIC Study. Lancet 1995; 345:273-78.

**Kightlinger L, Seed JR, Kightlinger MB.** The epidemiology of Ascaris lumbricoides, Trichuris trichiura and Hookworm in children in the Ranomafana Rainforest, Madagascar. J Parasitol 1995; 81:59-169.

**Kohlmeier L, Hastings SB.** Epidemiologic evidence of a role of carotenoids in cardiovascular disease prevention. Am J Clin Nutr 1995; 62S:1370S-6S.

**Kohlmeier L, Simonsen N, Mottus D.** Dietary modifiers of carcinogenesis. Environ Health Perspect 1995; 103(8):177-184

**Kromhout H, Loomis DP, Mihlan GJ, Peipins LA, Kleckner RC, Iriye R, Savitz DA.** Assessment and grouping of occupational magnetic field exposure in five electric utility companies. Scand J Work Environ Health 1995; 21:43-50.

**Liao D, Barnes RW, Chambless LE, Simpson RJ Jr, Sorlie P, Heiss G, for the ARIC Investi-gators.** Age, race, and sex differences in autonomic cardiac function measured by spectral analysis of heart rate variability--The ARIC Study. Am J Cardiol 1995; 76:906-912.

**Lipscomb HJ, Loomis DP, Dement JM.** Survival techniques for analysis of occupational injury data. Epidemiol 1995; 6 (suppl):S113.

**Loomis DP, Browning SR, Savitz DA, et al.:** Cancer mortality and exposure to PCBs among electric power workers in the USA. Epidemiol 1995; 6(suppl):S112.

**Millikan R, Hulka BS, Thor A, Zhang Y, Edgerton S, Zhang X, Pei H, He M, Wold L, Melton LJ, Ballard D, Conway K, Liu ET.** p53 mutations in benign breast tissue. J Clin Oncol 1995; 13(9):2293-2300.

**Murray S, Sandler R, Keku T, Lyles C, Millikan R, Bangdiwala S, Kupper L, Jiang W, Ulshen M.** Comparison of rectal mucosal proliferation measured by PCNA immunohistochemistry and whole crypt dissection. Cancer Epidem Biomarkers Prev 1995; 4:715-720.

**Nabulsi AA, Folsom AR, Heiss G, Weir SS, Chambless LE, Watson RL, Eckfeldt JH.** Fasting hyperinsulinemia and cardiovascular disease risk factors in nondiabetic adults: stronger associations in lean versus obese subjects. Metabolism 1995; 44:914-922.

**Olshan AF, Ananth CV, Savitz DA.** Intrauterine growth retardation as an endpoint in mutation epidemiology: an evaluation based on paternal age. Mutat Res 1995; 344:89-94.

**Ortiz JC, Seed JR.** The removal of trypanolytic activity from human serum by Trypanosoma brucei gambiense and its subsequent recovery in trypanosome lysates. J Parasitol 1995; 81:555-558.

**Richardson D, Loomis D, Wolf S, et al.:** Fatal agricultural injuries in North Carolina. Epidemiology 1995; 6(suppl):S99.

**Savitz DA, Loomis DP.** Magnetic field exposure in relation to leukemia and brain cancer mortality among electric utility workers. Am J Epidemiol 1995;141:123-134.

**Sayle AE, Cooper GS, Savitz DA.** Menstrual and reproductive history of mothers of galactosemic children. Fertil Steril 1996; 65:534-8.

**Sawalhy AE, Seed JR, Attar HE, Hall JE.** Catabolism of tryptophan by Trypanosoma evansi. J Eucaryotic Microbiology 1995; 42:98-102.

**Schnitzer PG, Teschke K, Olshan AF.** A classification scheme for aggregating US census occupation and industry codes. Am J Ind Med 1995; 28:185-191.

**Schnitzer PG, Olshan AF, Savitz DA, Erickson JD:** Paternal occupation and risk of birth defects in offspring. Epidemiology 1995; 6:577-583.

**Seed JR, Sechelski J.** The inheritance of factors controlling resistance in mice infected with Trypanosoma brucei rhodesiense. J Parasitol 1995; 81:653-657.

**Stamm LV, Frye JG, Hardham JM.** Nucleotide sequence of the Leptospira biflexa recA gene. Gene 1995; 167:339-340.

**Symanski E, Hertz-Picciotto I.** Blood lead levels in relation to menopause, smoking, and parity. Am J Epidemiol 1995;141:1047-1058.

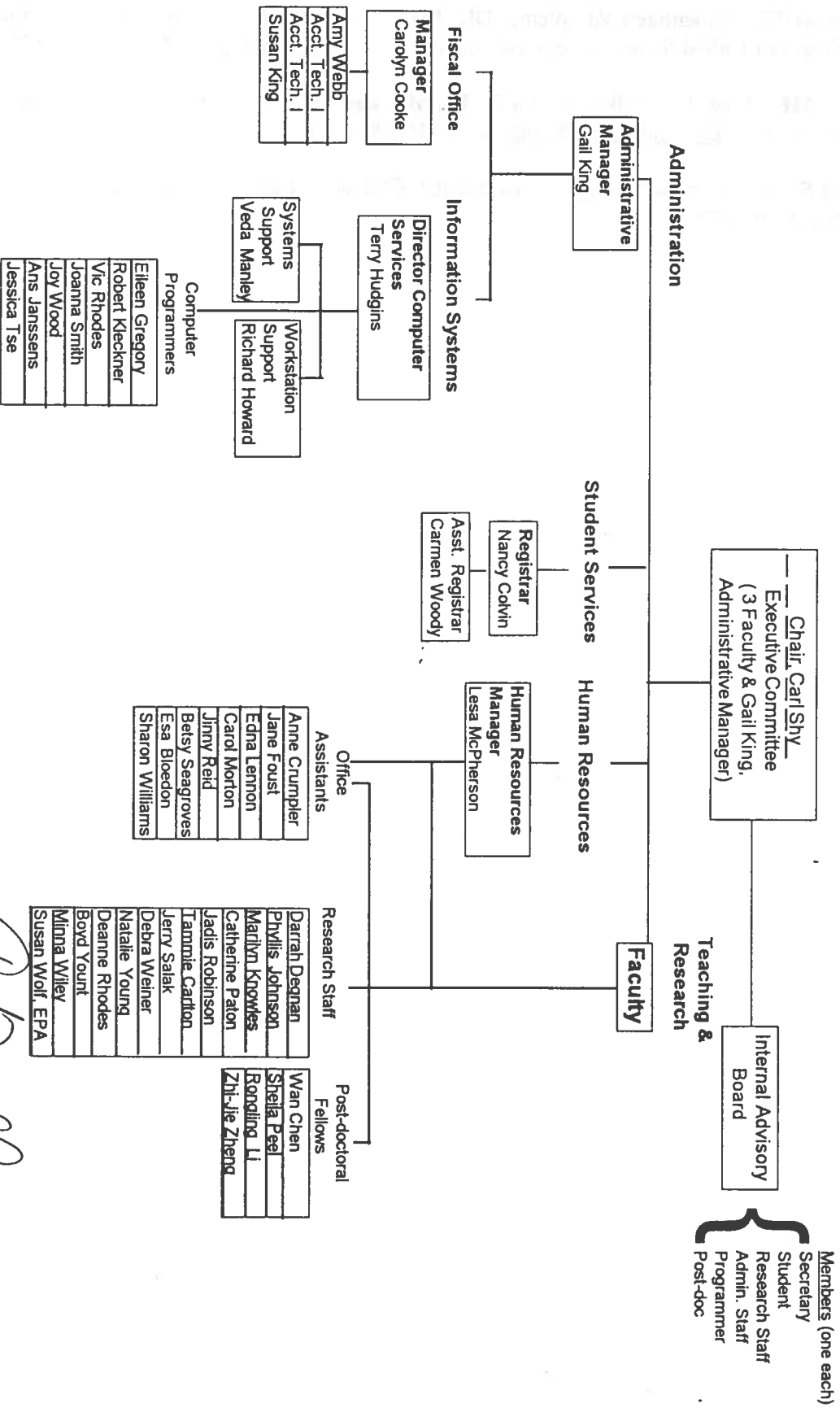
**Thomas JC, Kulik A, Schoenbach VS, Weiner D.** Syphilis in the South: rural rates surpass urban rates in North Carolina. Am J Public Health 1995;85:1119-22.

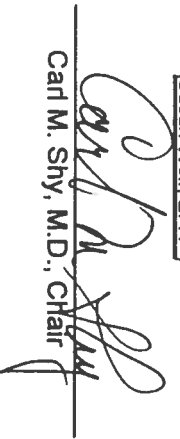
**Thomas JC, Schoenbach VJ, Weiner DH, Parker EA, Earp JA.** Rural gonorrhea in the southeastern United States: a neglected epidemic? Amer J Epidemiol 1996; 143:269-77.

**Vine MF, Moe C, Hulka B, Baric R, Millikan R.** More on teaching molecular epidemiology. Epidemiology Monitor 1995; 16(8&9):6-7.

**Wing S.** Whose epidemiology, whose health? Childhood Cancer Research Institute, August:1-10, 1995.

# Department of Epidemiology 1995-1996 Organization Chart



  
 Carl M. Shy, M.D., Chair

1-2-96  
 Date