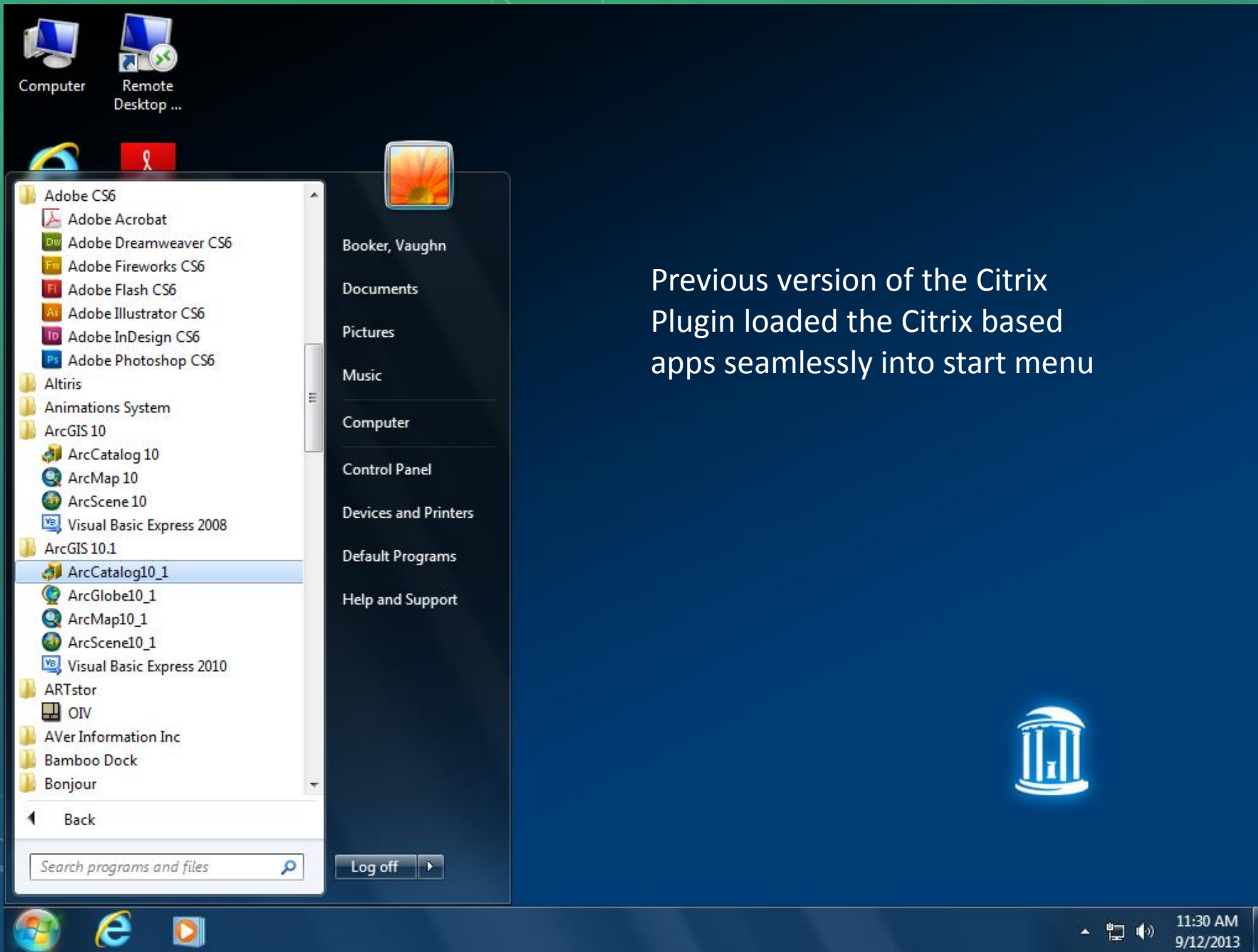
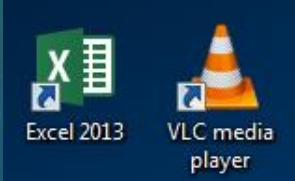
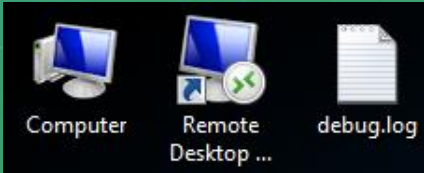


LAUNCHING CITRIX APPS USING CITRIX RECEIVER





Previous version of the Citrix Plugin loaded the Citrix based apps seamlessly into start menu



The new Citrix Receiver must be launched to load applications

- Locate Citrix Receiver in System Tray



Computer Remote Desktop ... debug.log

Internet Explorer Adobe Reader XI

Mozilla Firefox iTunes

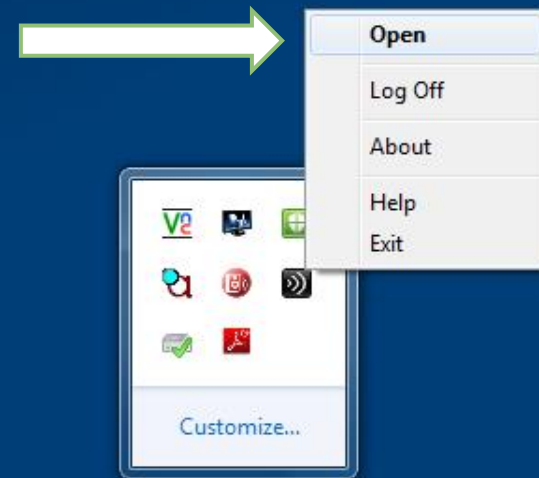
Google Chrome QuickTime Player

Word 2013 RealPlayer

Excel 2013 VLC media player

PowerPoint 2013 Google Earth

- Right Click to Open Citrix Receiver



- Computer
- Internet Explorer
- Mozilla Firefox
- Google Chrome
- Word 2013
- Excel 2013
- PowerPoint 2013

Citrix Receiver

Booker, Vaughn

ADD YOUR FAVORITE APPS

Click to add apps

Notice Automatic Citrix login

- Computer
- Internet Explorer
- Mozilla Firefox
- Google Chrome
- Word 2013
- Excel 2013
- PowerPoint 2013

Citrix Receiver Booker, Vaughn

Citrix Receiver

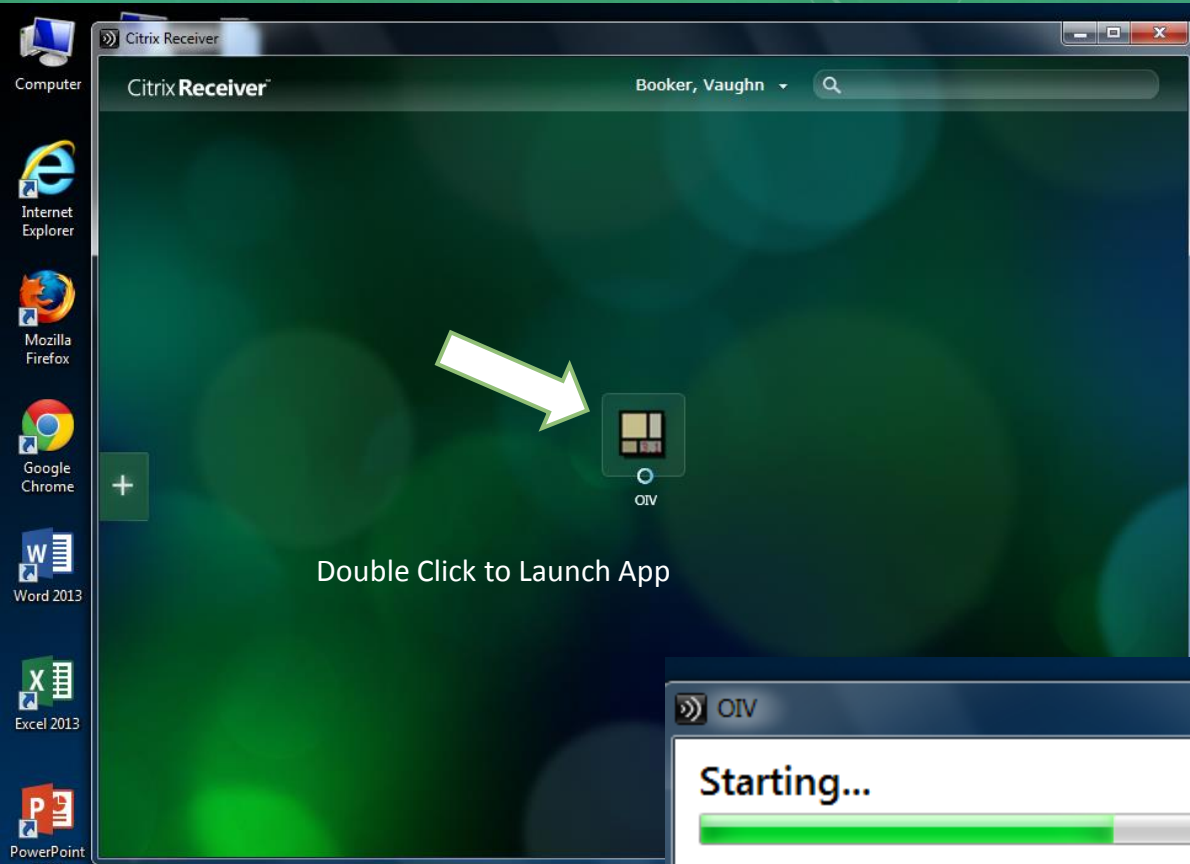
- All Applications
- Adobe CS6
- Animations System
- ArcGIS 10
- ArcGIS 10.1
- ARTstor**
- Chemistry Applications
- ENVI
- Epi Info
- JOMC
- Math Applications
- Microsoft Office 2010(Citrix)
- Microsoft Office 2013(Citrix)
- NHDPlusTools(Citrix)
- Remote Services
- RiverTools
- SaTScan

ADD YOUR FAVORITE APPS

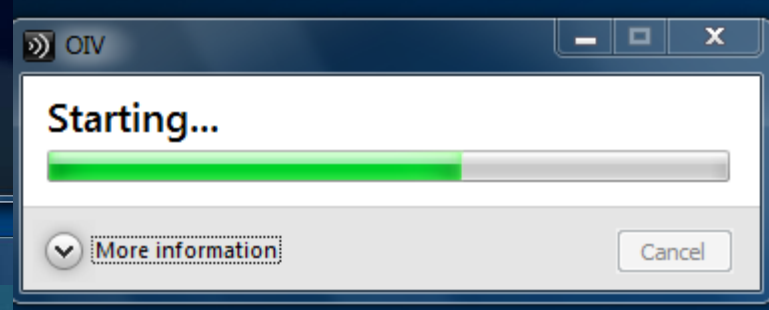
OV



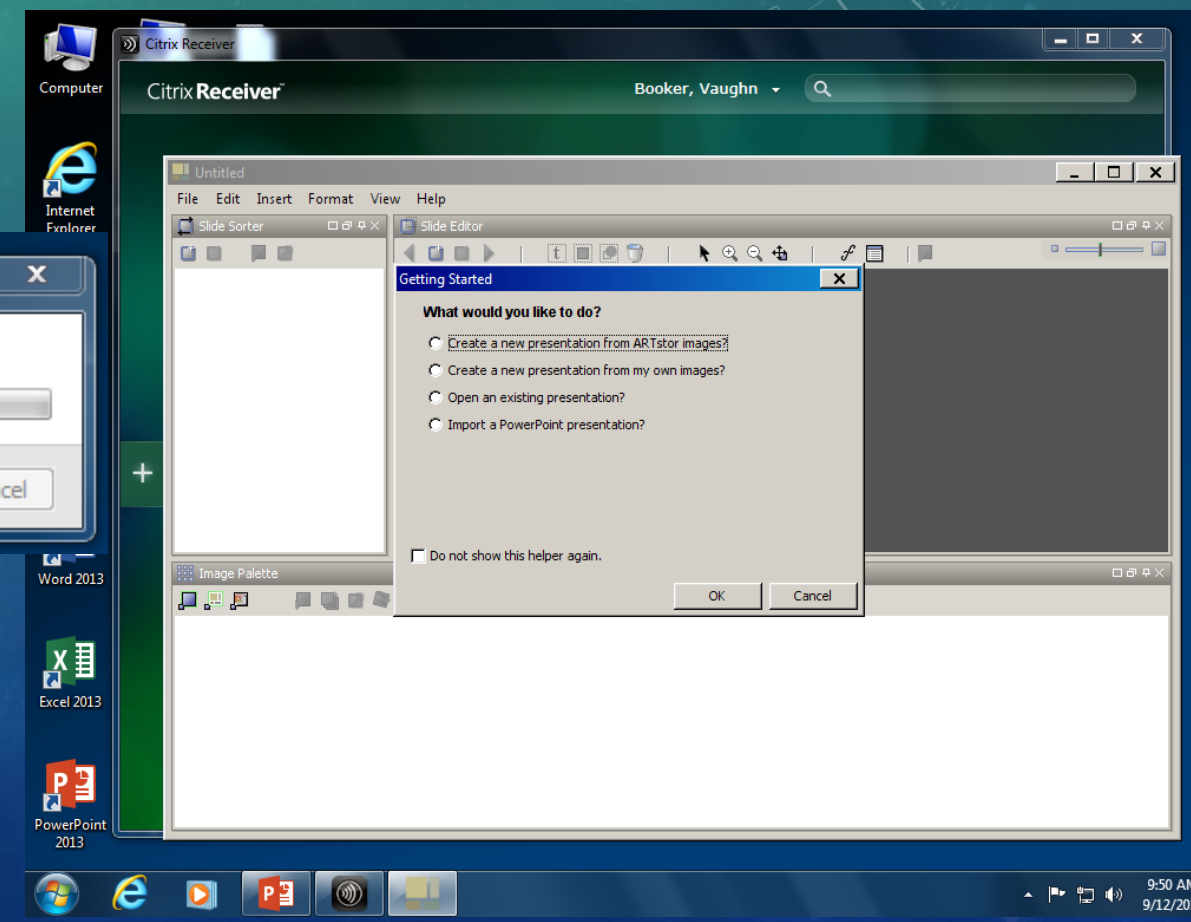
Select your desired App and click to add to dashboard

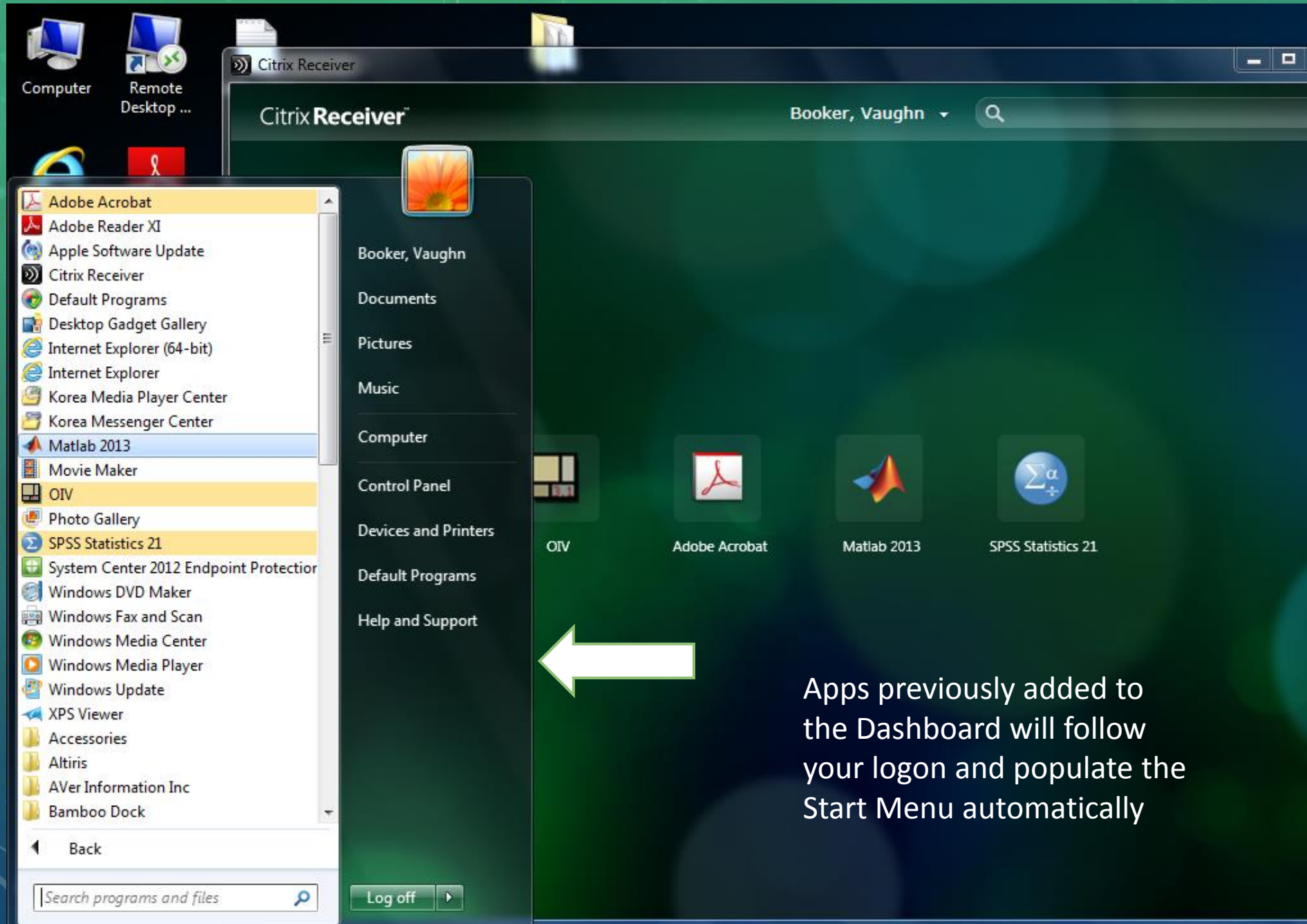


Double Click to Launch App



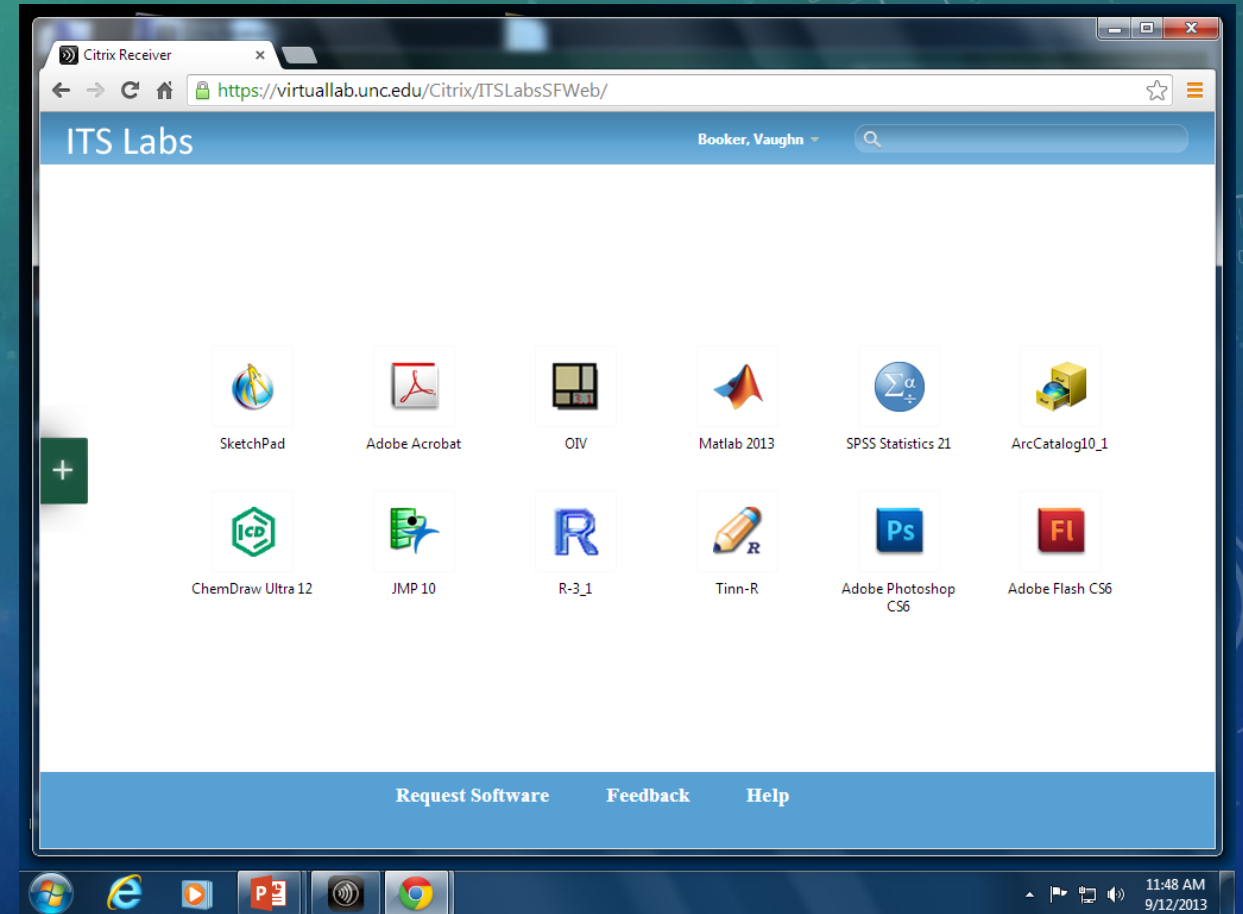
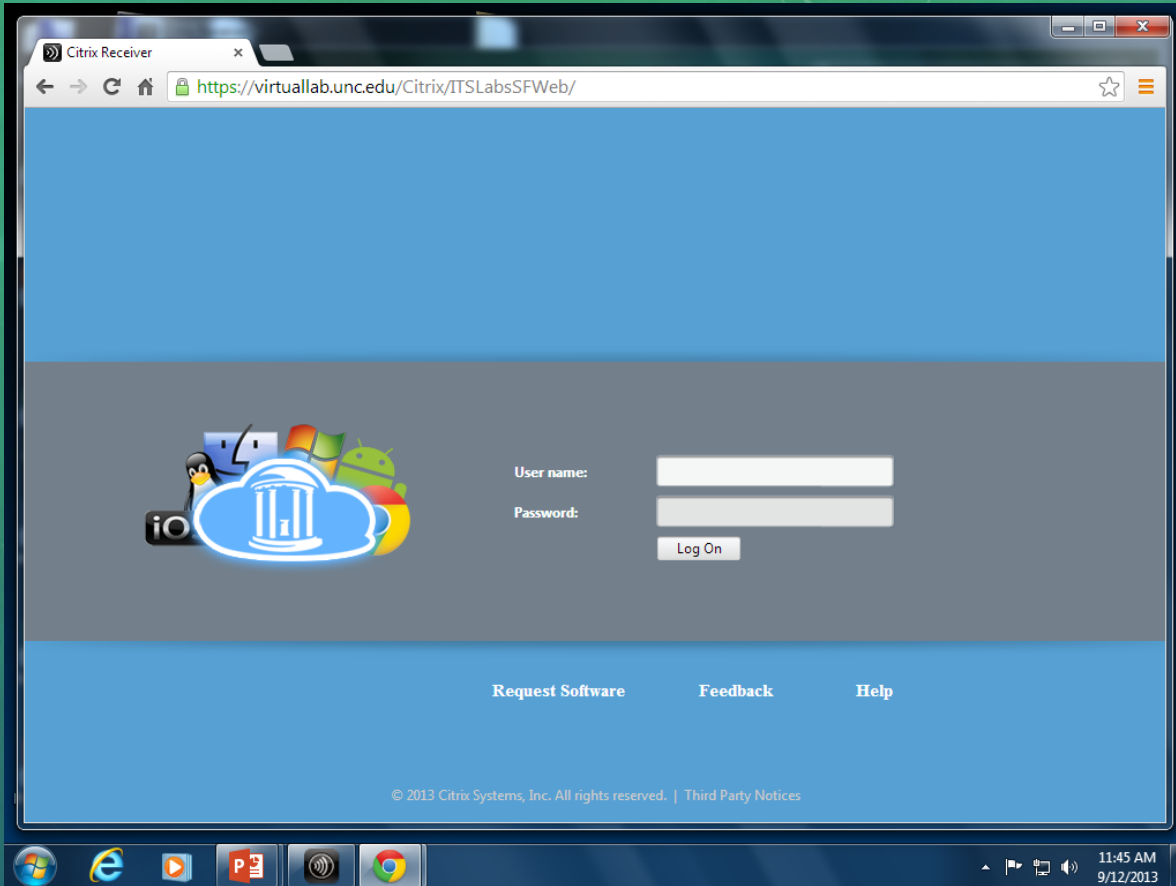
Double Click to Launch App from Citrix Dashboard

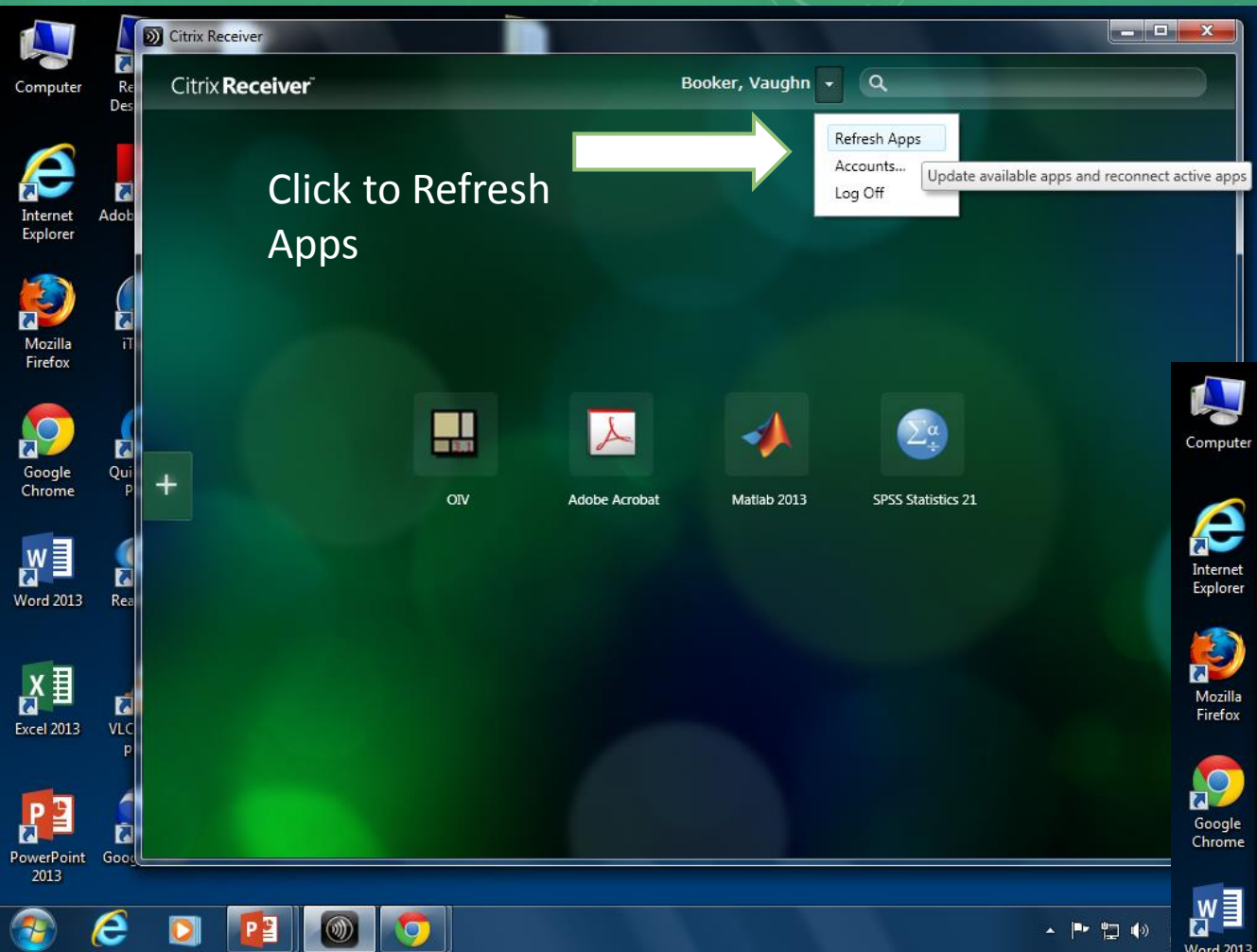




Apps previously added to the Dashboard will follow your logon and populate the Start Menu automatically

App selections can be made prior to class by visiting <https://virtuallab.unc.edu>







Citrix Receiver

Booker, Vaughn

SketchPad

Adobe Acrobat

OIV

Matlab 2013

SPSS Statistics 21

ArcCatalog10_1

+

ChemDraw Ultra 12

JMP 10

R-3_1

Tinn-R

Adobe Photoshop CS6

Adobe Flash CS6

Apps added to Dashboard will follow your Onyen logon to which ever classroom you are using!!!